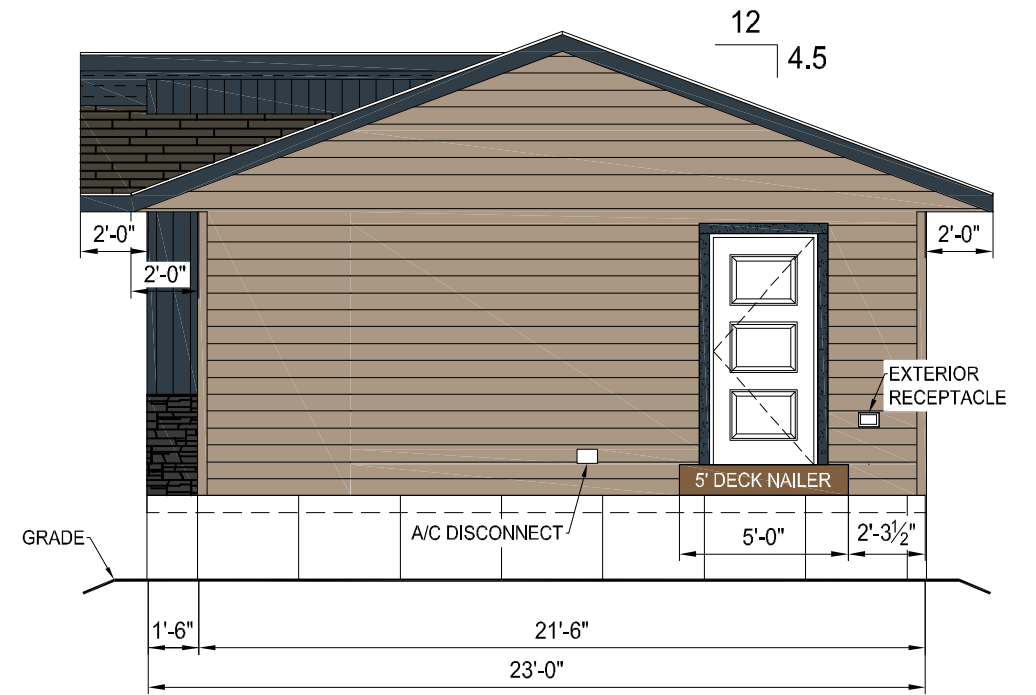
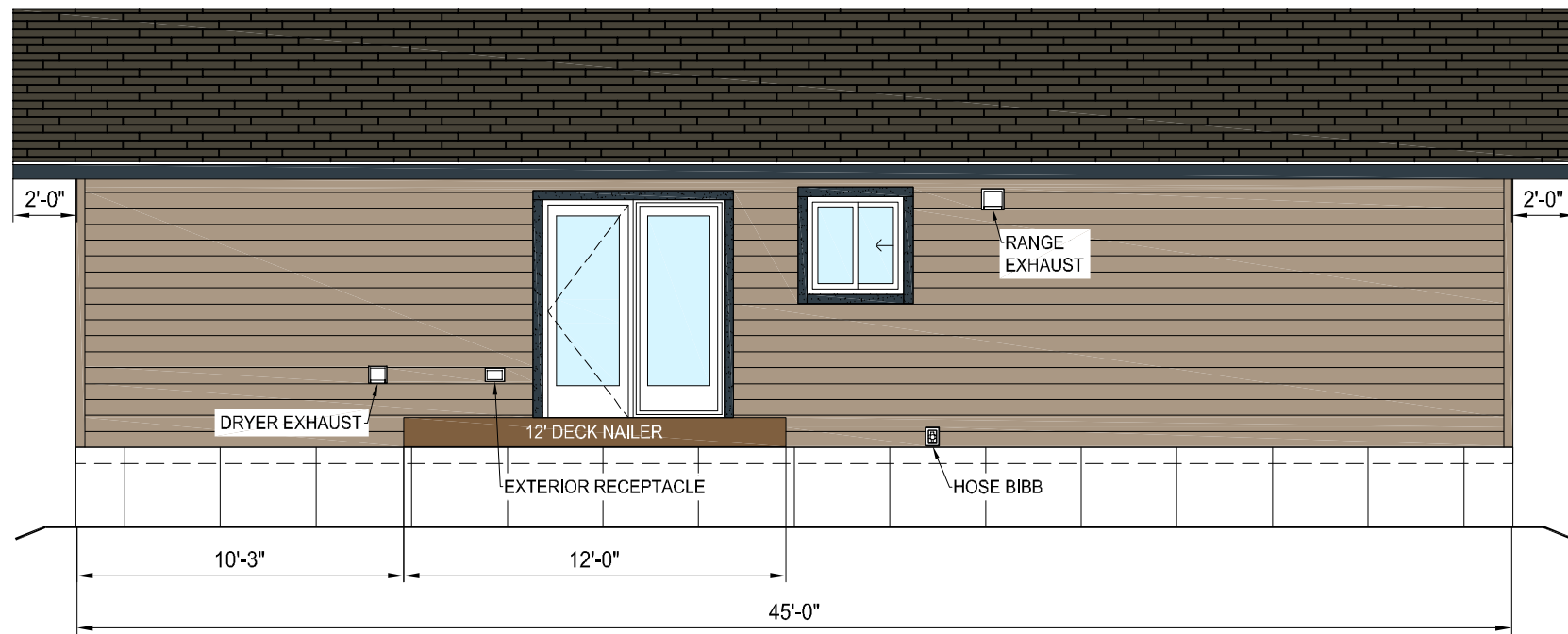


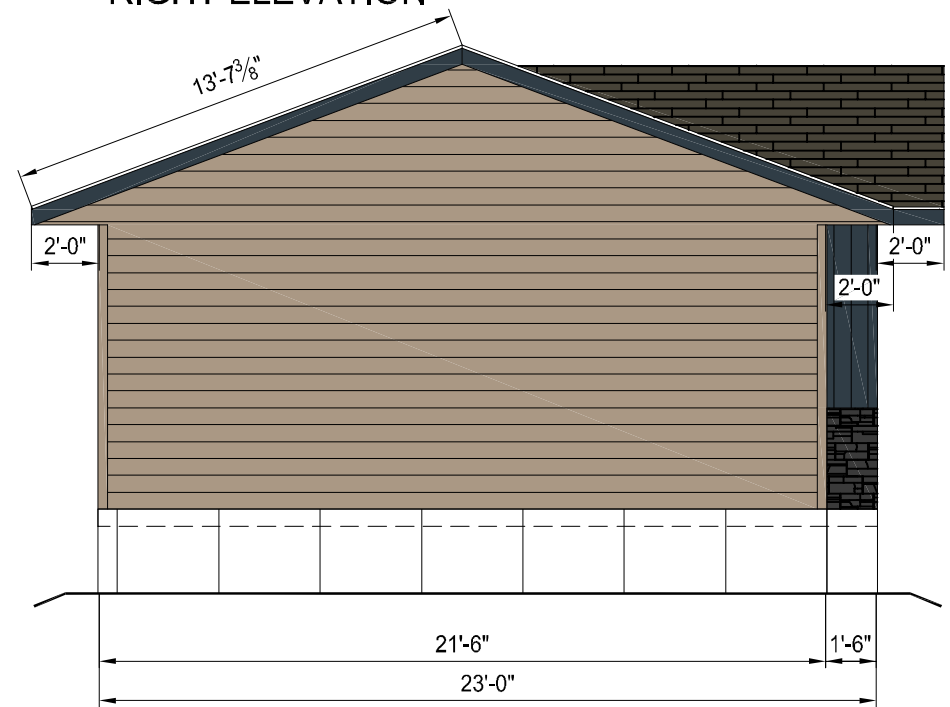
FRONT ELEVATION



RIGHT ELEVATION



REAR ELEVATION



LEFT ELEVATION

DRIFTWOOD II D4.5 - PEBBLE (880 SQFT.)

BOARD & BATTEN - MARINE DUSK (100 SQFT.)

SMART TRIM - MARINE DUSK

FAUX ROCK - GREY BLEND (55 SQFT.)

SHINGLES - WEATHERWOOD (1392 SQFT.)



59504 - RR32
P.O. BOX 4580
BARRHEAD, AB T7N 1A4
PHONE: (780) 305-0505
FAX: (780) 305-0506

REVISIONS:

NUMBER	DATE	BY	DESCRIPTION
01	May. 22, 24		INITIAL RELEASE
02			
03			
04			

COPYRIGHT RESERVED. THIS DRAWING IS AN INSTRUMENT OF SERVICE FOR THE PROJECT SPECIFIED. THIS DRAWING, DESIGN AND/OR RELATED DOCUMENTS ARE EXCLUSIVE PROPERTIES OF NORTHPLEX LTD. AND MAY NOT BE USED IN WHOLE OR IN PART WITHOUT THE COMPANY'S WRITTEN CONSENT. THE CONTRACTOR SHALL CHECK AND VERIFY ALL DIMENSIONS AND MEASUREMENTS SHOWN ON THE DRAWINGS. WHERE DISCREPANCIES OCCUR, THEY SHALL BE REPORTED TO NORTHPLEX LTD. BEFORE PROCEEDING WITH ANY PORTION OF THE WORK IN THE CONTRACT.

SERIAL NUMBER:
NPL-023-002-1555.DWG

PROJECT INFO:
STOCK HOME
NORTHPLEX. LTD.
23'X45'
999. SQ. FT

TITLE:
ELEVATION

DATE: May. 22, 24
SCALE: NTS

DRAWN BY: PK
CHECKED BY: ----

REFERENCE NUMBER:
NPL-1451