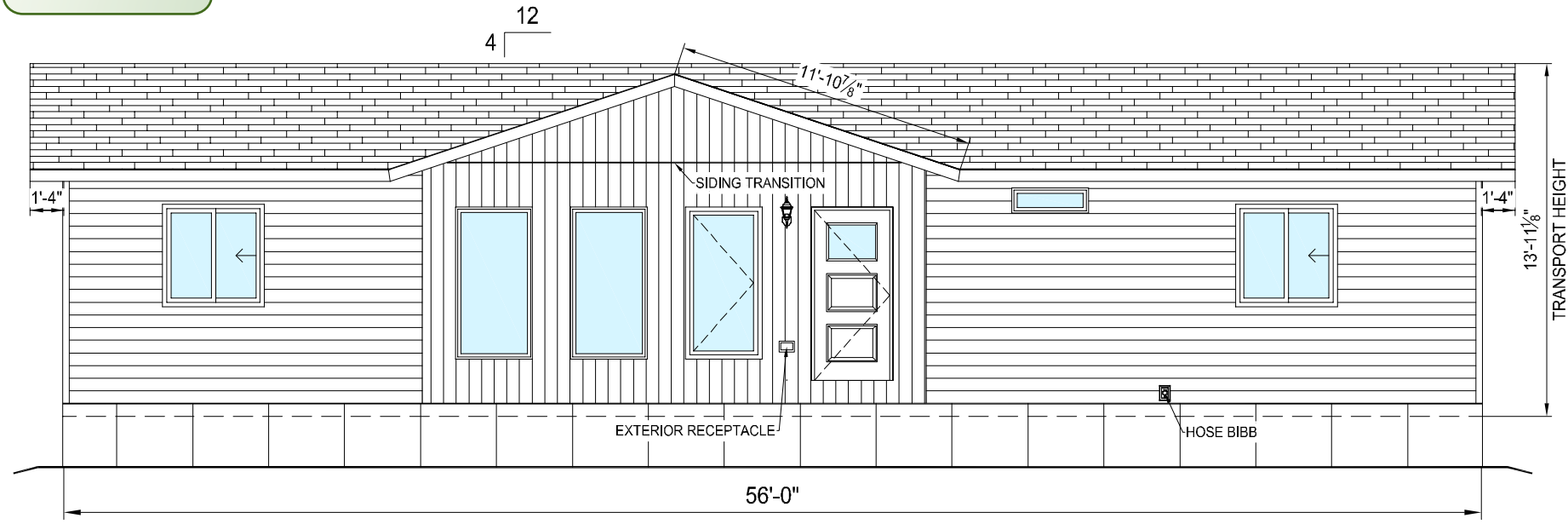
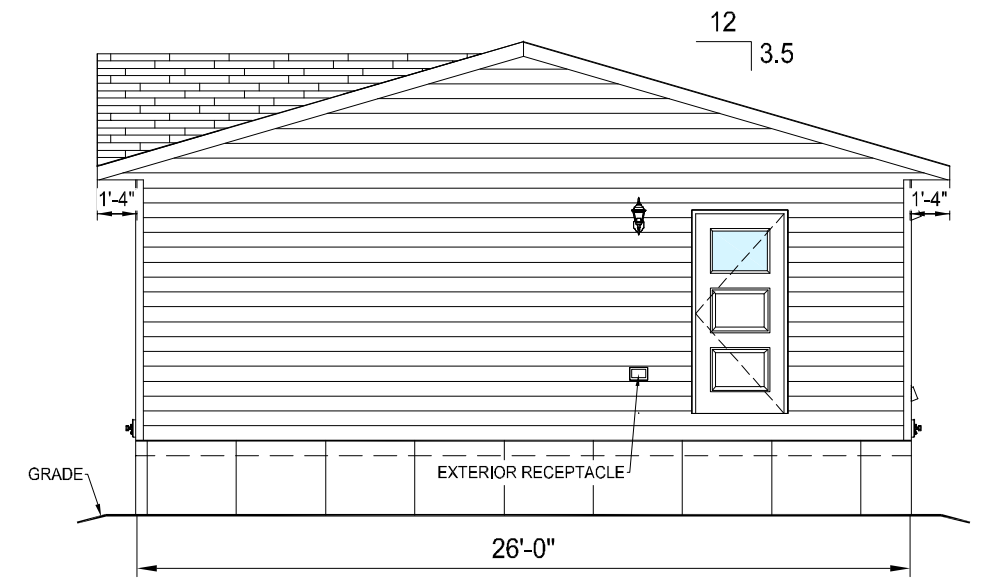


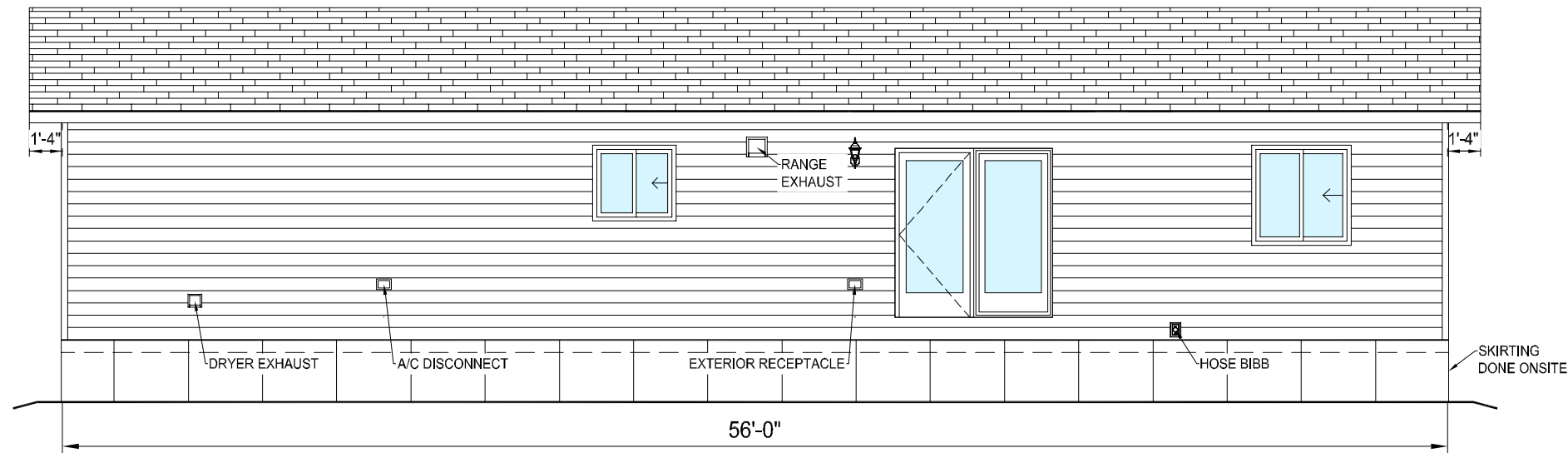
**FINAL**



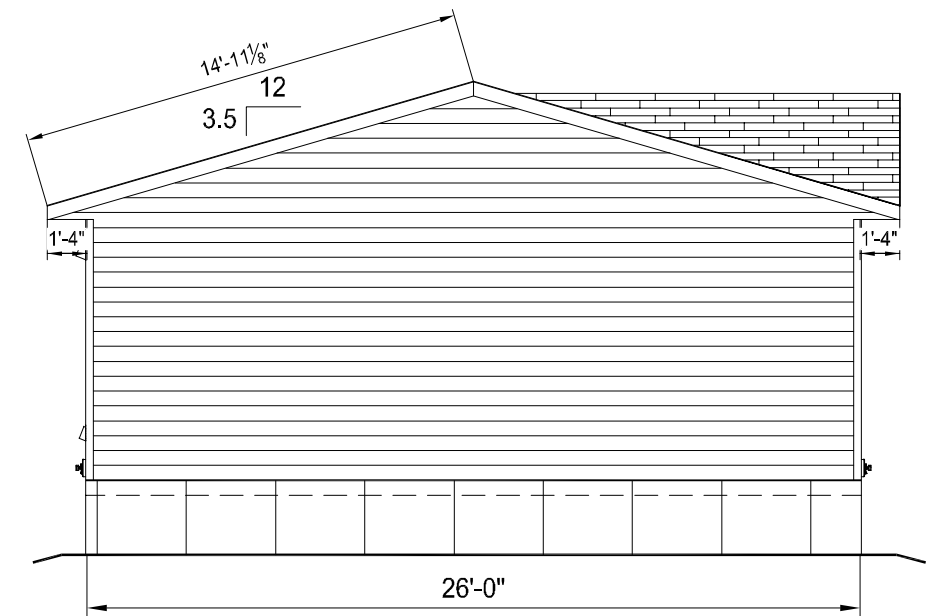
FRONT ELEVATION



RIGHT ELEVATION



REAR ELEVATION



LEFT ELEVATION

- HORIZONTAL SIDING - 1240 SQFT
- VERTICAL SIDING - 135 SQFT
- SHINGLES - 1910 SQ.FT.
- SKIRTING

REVISIONS:

NUMBER	DATE	BY	DESCRIPTION
01	Jan. 19, 24		INITIAL RELEASE
02			
03			
04			

COPYRIGHT RESERVED. THIS DRAWING IS AN INSTRUMENT OF SERVICE FOR THE PROJECT SPECIFIED. THIS DRAWING, DESIGN AND/OR RELATED DOCUMENTS ARE EXCLUSIVE PROPERTIES OF NORTHPLEX LTD. AND MAY NOT BE USED IN WHOLE OR IN PART WITHOUT THE COMPANY'S WRITTEN CONSENT. THE CONTRACTOR SHALL CHECK AND VERIFY ALL DIMENSIONS AND MEASUREMENTS SHOWN ON THE DRAWINGS. WHERE DISCREPANCIES OCCUR, THEY SHALL BE REPORTED TO NORTHPLEX LTD. BEFORE PROCEEDING WITH ANY PORTION OF THE WORK IN THE CONTRACT.

SERIAL NUMBER:  
NPL-026-079-(1521-1522).DWG

PROJECT INFO:  
NORTHPLEX. LTD.  
NORTHPLEX. LTD.  
26'X56'  
1456. SQ. FT

TITLE:  
ELEVATION NPL 1521

DATE: Jan. 19, 24  
SCALE: NTS  
DRAWN BY: CJM  
CHECKED BY: PK

REFERENCE NUMBER:  
PN 1173

M:\CURRENT WORKING FILES\NORTHPLEX LTD\26W\NPL-026-079\NPL-026-079-(1521-1522)\01 MODEL\NPL-026-079-(1521-1522).DWG



59504 - RR32  
P.O. BOX 4580  
BARRHEAD, AB T7N 1A4  
PHONE: (780) 305-0505  
FAX: (780) 305-0506